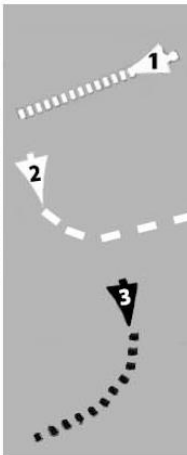


Legend

Women's 6K Race: Section 1 plus Section 2 plus Section 3
 Men's Open & Masters 10K Races: Section 1 plus 2 x Section 2 plus Section 3



Section 1

Distance: 0.94 miles / 1.52 km
 Location: Start to end of 1 lap around Polo Field
 Attributes: loop, mostly flat, unpaved path

Section 2

Distance: 2.64 miles / 4.25 km
 Location: From Polo Fields East End to loop around Golden Gate Park
 Attributes: loop, mixed flat & hills, unpaved path

Section 3

Distance: 0.25 miles / 0.39 km
 Location: From Polo Fields East End to Finish near Lower West End
 Attributes: point-to-point, all flat, unpaved path